



## GOAL 17

### PARTNERSHIPS FOR THE GOALS

*Swami Rama Himalayan University (SRHU) exemplifies its commitment to the United Nations Sustainable Development Goal 17 (SDG 17): Partnerships for the Goals, through strategic alliances, capacity building, and community-focused initiatives. By engaging with academic institutions, industries, governments, and international organizations, SRHU advances sustainable development regionally and globally.*

*The university fosters knowledge exchange and innovation through academic partnerships, joint programs, and faculty-student exchanges. Industry collaborations prepare students for future-ready roles, while government partnerships address health, technology, and sustainability challenges, contributing to policy frameworks for regional growth. Global collaborations drive solutions for pressing issues like climate change and inequality, fostering cultural exchange and global citizenship.*

*SRHU's Regional Centre for Medical Education has revolutionized faculty training in Northern India, equipping educators from 17 medical colleges with modern teaching methods. During COVID-19, hybrid and online training ensured continuity, with 997 faculty members trained to date, advancing medical education standards.*

*Community health initiatives under the National Jal Jeevan Mission trained over 7,300 individuals in water conservation, while maternal and child health programs addressed healthcare gaps in Uttarakhand. Livelihood projects have empowered over 5,000 farmers through organic farming and cash crops like turmeric and ginger, reducing migration and improving resilience.*

*SRHU has also been pivotal in disaster relief, aiding over 30,000 individuals during COVID-19 with health screenings, food kits, and welfare access.*

*Environmental initiatives, including rainwater harvesting and springshed management, promote sustainable resource use, while agricultural programs have enhanced incomes for thousands of farmers.*



*By integrating academic, research, and community outreach with SDG 17, SRHU demonstrates how institutions can act as catalysts for sustainable development. Its efforts provide scalable models for addressing global challenges and building a sustainable, equitable future.*

## Strengthening Regional and Local Collaborations

Swami Rama Himalayan University (SRHU) has undertaken transformative initiatives to address regional challenges in the Himalayan region. These efforts focus on community engagement, sustainable water management, sanitation, livelihood enhancement, disaster relief, and capacity building.

Key initiatives include collaborations with local NGOs and grassroots organizations to deliver healthcare, education, and environmental conservation. Under the National Jal Jeevan Mission, SRHU has trained over 7,300 individuals in springshed management, rainwater harvesting, and sanitation infrastructure development. These efforts have significantly improved access to safe water, hygiene practices, and public health outcomes.

Livelihood projects, such as organic farming and aromatic crop cultivation, have empowered over 5,000 farmers, reducing migration and fostering economic resilience. The university has also played a pivotal role in disaster relief, supporting vulnerable communities with essential resources during crises, including COVID-19.

SRHU's holistic approach integrates grassroots involvement, academic expertise, and governmental support, ensuring sustainable development. With scalable models and measurable impacts, the university continues to strengthen regional resilience and promote sustainability in Uttarakhand.

You can refer to the detailed tabular summary for more insights into these initiatives and their outcomes.

1

**In collaboration with the Rural Development Institute (RDI) SRHU has made significant contribution in providing opportunities for social upliftment.**

2

### Reach and Beneficiaries

Engaged in 31 states/UT, covering  
800+ villages  
Benefitted 65,000+ Adolescents,  
60,000+ Women, & 9,000+  
children

3

### Thrust Areas

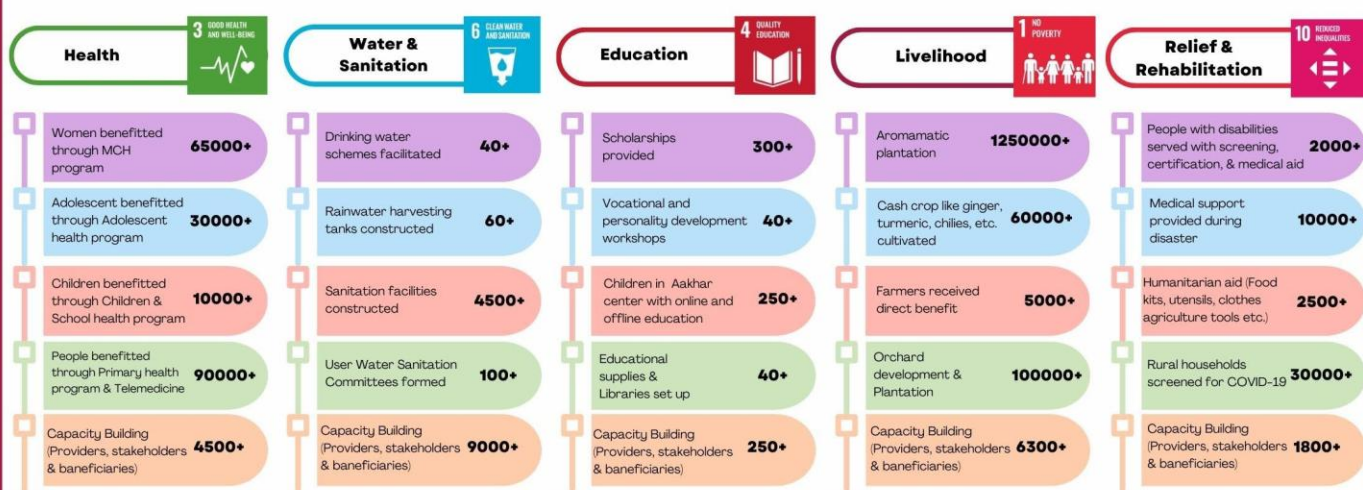
Health initiatives  
Water and Sanitation  
Education and Skill Development  
generating livelihood  
Relief and Rehabilitation



## Swami Rama Himalayan University in Collaboration with RDI-HIHT (Promoting Society of SRHU)



### Bird's Eye View of Contribution Among Marginalized Communities



Area of Focus	Initiatives and Actions	Achievements/Impact
<b>Community Engagement</b>	<ul style="list-style-type: none"> <li>- Collaborations with NGOs and grassroots organizations.</li> <li>- Focus on healthcare, education, and environmental conservation.</li> </ul>	<ul style="list-style-type: none"> <li>- Improved healthcare access in remote areas.</li> <li>- Enhanced education for underprivileged children.</li> <li>- Promoted sustainable practices.</li> </ul>
<b>Water Supply and Sanitation</b>	<ul style="list-style-type: none"> <li>- Addressed water scarcity in Himalayan regions.</li> <li>- Community-driven approaches involving local stakeholders.</li> </ul>	<ul style="list-style-type: none"> <li>- Safe water access: 55 liters per capita per day.</li> <li>- Significant reduction in waterborne diseases.</li> <li>- Cleaner, healthier communities.</li> </ul>
<b>National Jal Jeevan Mission</b>	<ul style="list-style-type: none"> <li>- Springshed management and rainwater harvesting.</li> <li>- Training of 7,300+ individuals.</li> <li>- Sanitation infrastructure development.</li> </ul>	<ul style="list-style-type: none"> <li>- Constructed 3,100 toilets across 96 villages.</li> <li>- Built 309 rainwater harvesting tanks.</li> <li>- Developed 55 hectares of springshed areas.</li> </ul>
<b>Hygiene Promotion</b>	<ul style="list-style-type: none"> <li>- Awareness campaigns on handwashing and sanitation practices.</li> </ul>	<ul style="list-style-type: none"> <li>- Over 90% of residents adopted regular handwashing habits.</li> <li>- Improved public health outcomes.</li> </ul>



<b>Livelihood Development</b>	<ul style="list-style-type: none"> <li>- Introduced organic farming and aromatic crops.</li> <li>- Trained farmers in orchard development.</li> <li>- Promoted cash crop cultivation.</li> </ul>	<ul style="list-style-type: none"> <li>- Supported 5,000 farmers.</li> <li>- Established 10 lemon orchards.</li> <li>- Harvested significant quantities of lemongrass, turmeric, and ginger.</li> </ul>
<b>Relief and Rehabilitation</b>	<ul style="list-style-type: none"> <li>- COVID-19 relief: Training frontline workers and distributing essential kits.</li> <li>- Disaster medical aid for vulnerable communities.</li> </ul>	<ul style="list-style-type: none"> <li>- Aided 30,000 individuals during COVID-19.</li> <li>- Provided resources to 2,000 differently-abled individuals.</li> <li>- Assisted 10,000 disaster-affected individuals.</li> </ul>
<b>Training and Capacity Building</b>	<ul style="list-style-type: none"> <li>- Trained 9,000+ individuals in water and sanitation management.</li> <li>- Acted as a National Training Partner for key programs.</li> </ul>	<ul style="list-style-type: none"> <li>- Benefitted participants from 28 states/UTs.</li> <li>- Strengthened community skills for sustainable development.</li> </ul>
<b>Regional Development Projects</b>	<ul style="list-style-type: none"> <li>- Conducted outreach programs.</li> <li>- Encouraged social entrepreneurship among students and faculty to address local challenges.</li> </ul>	<ul style="list-style-type: none"> <li>- Enhanced regional resilience and sustainability.</li> <li>- Promoted innovative solutions to regional issues.</li> </ul>

**Acknowledgment from Andaman Nicobar State Water And Sanitation Mission, for organizing training on capacity building program in compliance of Jal Shakti Ministry, GoI**

Telefax: 03192-233094  
अण्डमान निकोबार राज्य जल एवं स्वच्छता मिशन  
**ANDAMAN NICOBAR STATE WATER AND SANITATION MISSION**  
(समिति संविधान अधिनियम 1860 के अंतर्गत पंजीकृत संगीति)  
(A Society registered under Society Registration Act 1860)  
मुख्य अभियंता कार्यालय परिसर, अ.स.सी.एच.सि.सि., निर्माणमन, पोर्टब्लेयर  
**CE's OFFICE COMPLEX, APWD, NIRMAL BHAWAN, PORTBLAIR**  
पंजीकरण सं. 1352  
Registration No. 1352  
No. 1-19/ANSWSM/2021-22/15 Port Blair, dated the 15 Dec., 2023

**LETTER OF APPRECIATION**

This is to certify that on request from ANSWSM officers of Swami Rama Himalayan University, Jolly Grant, Dehradun, Himalayan Institute Hospital Trust, an empanelled Knowledge Resource Center (KRC) under National Jal Jeevan Mission organised training program for engineers and officers working in the field of water supply in Andaman Public Works Department.

Training was organized from October 30<sup>th</sup> to November 01<sup>st</sup>, 2023 as part of capacity building program in compliance of Guide lines of Jal Shakti ministry, Government of India for engineers and officers working under Jal Jeevan Mission of the state.

Topic of training was "Operation & Maintenance of the Water Supply System, Utility Approach and Tariff Collection Mechanism". Total 51 engineers and officers participated in the program. It included discussion on important components of water supply system, quality, sustainability issues and other different aspect of community participation. Training included lecture and field visit as well as team work.

The team of six resource persons of SRHU headed by Advisor Shri H.P Uniyal trained our officers on different. Overall, training programme was very useful and beneficial to our officers. I convey my best wishes to the team of resource person from SRHU.

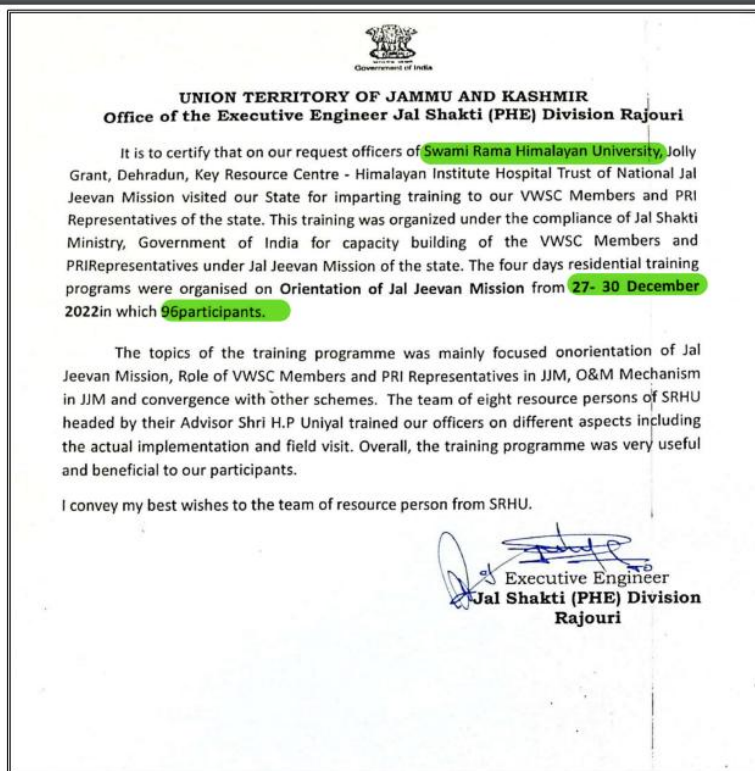
*Ram Kumar*  
Director  
ANSWSM

To  
The Himalayan Institute Hospital Trust,  
Swami Rama Himalayan University,  
Jolly Grant, Dehradun  
Uttarakhand





**Acknowledgment from the office of  
Executive Engineer Jal Shakti (PHE)  
Division Rajouri, Jammu & Kashmir for  
organizing training on capacity  
building in compliance of Jal Shakti  
Ministry, GoI**



## Strategic Partnerships and Collaborations

Swami Rama Himalayan University (SRHU) actively engages in collaborations across academic, industrial, governmental, and international sectors to drive innovation and sustainable development. Academic partnerships promote cross-disciplinary expertise, global perspectives, and enriched research opportunities. Collaborations with industries and government organizations focus on skill development, societal challenges, and policy consultation. International alliances facilitate research on global issues like climate change and public health, alongside cultural exchange programs that nurture global citizenship. These partnerships underscore SRHU's commitment to fostering knowledge exchange, addressing critical challenges, and creating a sustainable future.

Collaboration Type	Key Initiatives	Outcomes/Impact
Academic Collaborations	<ul style="list-style-type: none"><li>- Joint academic programs fostering cross-disciplinary expertise.</li><li>- Student and faculty exchange initiatives.</li><li>- Shared research infrastructure for enriched learning and innovation.</li></ul>	<ul style="list-style-type: none"><li>- Enhanced global perspectives among students and faculty.</li><li>- Improved academic and research outcomes.</li><li>- Stronger knowledge exchange networks.</li></ul>
Industry and Government Partnerships	<ul style="list-style-type: none"><li>- Skill-building programs to develop industry-ready professionals.</li><li>- Joint projects tackling societal challenges like health, sustainability, and technology.</li></ul>	<ul style="list-style-type: none"><li>- Better employability for students.</li><li>- Addressed critical regional and national issues.</li></ul>



	- Policy consultation for sustainable growth frameworks.	- Influenced sustainable development policies.
<b>International Collaborations</b>	- MoUs with global institutions for collaborative research. - Research initiatives on climate change, public health, and inequality. - Cultural exchange programs to foster global citizenship.	- Solutions for pressing global challenges. - Stronger cross-cultural understanding. - Broadened scope for innovation and collaboration.

S. No.	Name of the Party	Title of Agreements/MoUs/License Deeds	Document Link
1	AIIMS Rishikesh	To exchange information, articles, reports and teaching material in order to support the collaborating teaching, training & research activities between AIIMS Rishikesh and Swami Rama Himalayan University.	<a href="#">Link</a>
2	Medical Pollution Control Committee	To dispose of and arrange material of operation & maintenance of the Bio-Medical Waste generated at Himalayan Hospital.	<a href="#">Link</a>
3	Mahatma Gandhi National Council for Rural Education, Hyderabad	1- For academic and research development and capacity building in the field of management discipline with specific courses in rural management, both at the UG and PG level. 2- To enhance relations and recognize the benefits to be derived from increased mutual collaboration, cooperation and interaction for further promotion.	<a href="#">Link</a>
5	Shaheed Durga Mall College, Doiwala	Either party agreed for collaborative work in the area concerning to social, health, educational management etc. In order to discharge the social responsibility	<a href="#">Link</a>
6	SGPGI, Lucknow	To exchange information, articles, reports and teaching materials in order to support the educational programs of each institution in the field of the Professional Competencies (particularly the areas of Communication, Skills, Ethics, Professionalism)	<a href="#">Link</a>
8	CSIR-CIMAP, Lucknow	To share the facilities and expertise available in each other's Institutes.	<a href="#">Link</a>
9	ICMR- NCDIR	Hospital Based Cancer Registries in India	<a href="#">Link</a>
10	IIT, Roorkee	To exchange of research documents as per University norms, visits of faculty, staff and student to each other campus for promoting the excellent research in the field of Biomedical science, engineering and technology.	<a href="#">Link</a>
11	Social Development for Communities (SDC)	For sustainable development goals, climate change , waste management etc.	<a href="#">Link</a>
12	Global Consortium for Breast Cancer in Young Women (GCBCYW)	MEMORANDUM OF UNDERSTANDING (MoU) for establishing a Global Consortium for Breast Cancer in Young Women (GCBCYW) between(1) Cancer Research Institute (CRI), Swami Rama Himalayan	<a href="#">Link</a>



		University (SRHU), Dehradun, India (2) Lisbon Academic Medical Centre -North Lisbon University Hospital Centre, Lisbon, Portugal (3) Graduate School of Medicine and Faculty of Medicine Kyoto University, Kyoto, Japan (4) Advanced Centre for Treatment, Research and Education in Cancer (ACTREC), Tata Memorial Centre, Mumbai, India (5) Rajiv Gandhi Cancer Institute and Research Centre (RGCIRC), New Delhi, India	
<b>13</b>	Regional Centre for Urban & Environmental Studies (RCUES) Lucknow	For enabling efficient knowledge sharing and information exchange for enhancing the institutional capacity development	<a href="#">Link</a>
<b>14</b>	ECHO INDIA PROJECT	To demonopolize knowledge and amplify the capacity to provide best practice care for underserved people all over the world	<a href="#">Link</a>
<b>16</b>	Cochlear Implant Surgery Under ADIP Scheme of Government of India	For conducting Cochlear Implant Surgery for the Candidate approved by AYJNISHD	<a href="#">Link</a>
<b>17</b>	Mrs. Shirin Vidya Venkatramani	To provide funds to empower the skills leading to strengthening the income and lives of the people in need	<a href="#">Link</a>
<b>18</b>	CSIR-NBRI	Collaboration on Research & Development and Academic including faculty and student exchange	<a href="#">Link</a>
<b>19</b>	M/s. Life Cell International Pvt. Ltd.	To provide large range of diagnostic and pathology service	<a href="#">Link</a>
<b>20</b>	S. K Memorial Hospital	For referring / transfer of patient for appropriate care and treatment	<a href="#">Link</a>
<b>21</b>	International Medical Services (Proprieter Mr. Bipin Bihari Choubey)	Financial support for 3 years to Ph.D Student	<a href="#">Link</a>
<b>22</b>	INFLIBNET	To meet the objectives pertaining to submission and access to Electronic Thesis and Dissertations in Shodhganga as envisaged by the UGC	<a href="#">Link</a>
<b>23</b>	CSIR -IHBT	Collaboration on Research & Development and Academic including faculty and student exchange	<a href="#">Link</a>
<b>24</b>	American Heart Association	To provide training in the areas of Basic life support and Advanced Cardiac Life Support in collaboration with American Heart Association.	<a href="#">Link</a>
<b>25</b>	Indian Association of Uttarakhand (IAU), Dehradun	For jointly enriching the technical education process and for promoting industrial advancement	<a href="#">Link</a>
<b>26</b>	PHD Chamber of Commerce and	For strengthening the ties between industry and academia	<a href="#">Link</a>



	Industry, New Delhi, India		
27	Indian Society for Training and Development (ISTD), Dehradun	For strengthening the ties between industry and academia	<a href="#">Link</a>
28	National Health Mission, Uttarakhand, Danda, Lokhand, Dehradun	Supplementary MOU with NRHM Uttarakhand for RBSK for the treatment of Children's	<a href="#">Link</a>
29	The Hans Foundation	Treatment of poor children under 18 years who are suffering from diseases/conditions not covered under RBSK	<a href="#">Link</a>
30	Confederation Of Indian Industry ("CII") Young Indians (Yi)	For creating a platform for Young Indians to realize the dream of a developed nation	<a href="#">Link</a>
31	Airports Authority of India, New Delhi	For internship program	<a href="#">Link</a>
32	SRHU-HIHT for its Rural Development Institute(RDI)	To mutually share resources, conduct research, outreach activities in the field & cooperate with each other in area of village development, health, education, sanitation etc.	<a href="#">Link</a>
33	Auriga Research, New Delhi	For the purpose of jointly enriching the clinical research practices and for promoting research in the relevant field.	<a href="#">Link</a>
34	Tsukuba University, Japan	To provide framework for the future development of cooperation	<a href="#">Link</a>
35	KV Clinical Research Pvt Ltd, Raipur, Chhattisgarh	Executed/copies sent to legal dept. for notary purpose	
36	AIC STPINEXT INITIATIVES, Software Technology Park of India (STPI)	Executed/copies sent to legal dept. for notary purpose	
37	Hemwati Nandan Bahuguna Uttarakhand Medical Education University (HNBUMU), Dehradun	Executed	<a href="#">Link</a>
38	Mango DB	To explore the running of a program planned by Mango DB for Partner needs	
39	NABARD	To recognize and empanelled Himalayan Hospital under NABARD for providing healthcare facilities to their employees.	





40	ICIMOD, Kathmandu, Nepal	For Collaboration for the co-development and scaling of spring- shed water management	
41	Clinical Trial Agreement (Parexel International Clinical Research Pvt. Ltd)	Clinical Trial Agreement between Dr. Sanjeev Verma, Swami Rama Himalayan University and Parexel Int. Pvt. Ltd	
42	Biotech Consortium India Limited	For the transfer of technology(ies) to BCIL by Licensing to Industry for their further development and commercialization	
43	Tata Strive Google scholarship programme	For enhancing the employability	
44	Akhildev IPR & Research Services	For the purpose of IPR matters	
45	Stroke Registry		
46	ICMR-NIV		
47	CHC Doiwala		
48	Somaya Research & Health Services		

## Research and Innovation Networks

Swami Rama Himalayan University (SRHU) actively engages its faculty and researchers in collaborative projects addressing critical global and regional challenges. These joint research initiatives focus on:

- **Public Health:** Developing affordable and innovative healthcare solutions to improve access for underserved communities.
- **Sustainability:** Advancing renewable energy technologies and environmental conservation strategies to promote sustainable development.
- **Social Justice:** Exploring methods to reduce inequalities and enhance inclusivity within communities.

Through these projects, SRHU aims to create impactful solutions, drive innovation, and contribute meaningfully to global progress in critical areas.

[Link](#)

## Innovation Hubs



Swami Rama Himalayan University (SRHU) fosters innovation and entrepreneurship through its Technology Business Incubators (TBI). These incubators provide a robust platform for startups and entrepreneurs by offering:

- **Pre-Incubation and Incubation Facilities:** Supporting over 43 projects with the necessary infrastructure and guidance.
- **Funding and Mentorship:** Connecting innovators with funding opportunities and expert mentors to transform ideas into viable solutions.
- **Cutting-Edge Resources:** Access to state-of-the-art tools and research facilities to drive innovation and product development.

Through its TBIs, SRHU empowers entrepreneurs to create impactful solutions, contributing to economic growth and sustainable development.

---

## Knowledge Sharing Platforms

---

Swami Rama Himalayan University (SRHU) actively contributes to international journals, conferences, and global research networks, establishing itself as a hub of knowledge dissemination and collaboration. By sharing ground breaking insights and research findings, SRHU promotes innovation and supports global development objectives in several ways:

- **Publishing in International Journals:** SRHU researchers contribute to high-impact journals, ensuring the global academic community benefits from their expertise in public health, sustainability, social justice, and other critical areas. These publications help bridge knowledge gaps and inform policy-making on a global scale.
- **Participation in Global Conferences:** Faculty and researchers frequently present at international conferences, showcasing advancements in healthcare, renewable energy, and education. These platforms foster cross-border collaborations, encouraging the exchange of ideas and best practices.
- **Engagement with Global Research Networks:** SRHU actively collaborates with international research organizations and networks, addressing pressing challenges such as climate change, healthcare accessibility, and poverty alleviation. These partnerships amplify the impact of SRHU's research and align with the United Nations' Sustainable Development Goals (SDGs).

Through these efforts, SRHU not only drives innovation but also plays a crucial role in shaping sustainable, equitable, and inclusive development at a global level.

- List of teachers who attended Faculty Development Programmes including online programmes during the last five years: [Link](#)

---

## Capacity Building Initiatives

---

Swami Rama Himalayan University (SRHU) is dedicated to nurturing talent and fostering growth through its comprehensive skill development programs. These initiatives include workshops, seminars, and training sessions designed for students, faculty, and stakeholders. The key objectives are to:



- **Enhance Critical Skills:** Focus on building proficiency in research methodologies, entrepreneurial ventures, and leadership capabilities to prepare participants for real-world challenges.
- **Develop Expertise in Emerging Areas:** Provide specialized training in cutting-edge fields such as artificial intelligence, sustainable development, and advanced healthcare practices.

By equipping participants with these skills, SRHU ensures they are well-prepared to contribute to innovation, drive sustainable development, and excel in their respective fields.

- List of professional development Programme organized for teaching staff
- List of administrative training Programme organized for non-teaching / technical staff

---

## Empowering Education

Swami Rama Himalayan University (SRHU) places a strong emphasis on practical, hands-on training to prepare its students and faculty for the evolving demands of the modern world. By integrating advanced technologies and innovative methodologies into its training programs, SRHU ensures that participants gain the skills necessary to excel in cutting-edge fields.

Key aspects of this initiative include:

- **State-of-the-Art Resources:** Participants have access to modern laboratories, simulation centers, and high-end research equipment, allowing them to explore and master emerging technologies.
- **Comprehensive Training Modules:** Programs are designed to provide in-depth knowledge of tools and techniques across disciplines such as artificial intelligence, robotics, healthcare technology, renewable energy, and data analytics.
- **Real-World Applications:** Practical sessions and live projects help participants translate theoretical knowledge into actionable solutions, fostering creativity and problem-solving skills.
- **Collaboration with Industry Experts:** SRHU collaborates with industry leaders and experts to provide insights into the latest advancements and industry expectations, ensuring the training is both relevant and impactful.
- **Interdisciplinary Learning:** By integrating concepts from various fields, participants develop a holistic understanding of how technologies intersect, enabling them to address complex challenges.

Through these initiatives, SRHU equips its community with the confidence and expertise to innovate and lead in their respective domains. The focus on practical exposure ensures that students and faculty are not just proficient but are also future-ready, capable of driving meaningful change in a rapidly transforming world.

---

## Training for Global Stakeholders

Swami Rama Himalayan University (SRHU) has emerged as a leader in enhancing medical education standards by prioritizing the professional growth of health profession teachers. Through its **Regional Centre for Medical Education Technologies**, SRHU has significantly contributed to faculty development,



fostering innovation, and addressing the unique challenges of delivering medical education in rural and underserved areas of Northern India.

## Objectives

- **Faculty Development:** Equip educators with innovative teaching methodologies through targeted training programs.
- **Continuous Learning:** Conduct CME programs to keep faculty updated with advancements in healthcare and pedagogy.
- **Student-Centric Learning:** Enhance teaching practices to create a more engaging and effective learning environment, aligned with HH Swami Rama's vision.

## Context

When the **Himalayan Institute of Medical Sciences (HIMS)** was founded, it faced challenges such as difficulty recruiting qualified faculty and improving teaching quality. To overcome these hurdles, the institution prioritized training teachers in innovative, student-centered approaches.

## The Practice

1. **Initial Training Initiatives (1998–1999):**
  - Faculty trained at Maulana Azad Medical College, AIIMS Delhi, and Manipal University.
  - Core team members became FAIMER fellows, pursuing advanced expertise.
2. **Establishment of Regional Centre (2014):**
  - Recognized as a Regional Center for Medical Education by the Medical Council of India (MCI).
  - Conducted faculty training for 17 medical colleges in Northern India through workshops like BCME and CISP.
3. **Adaptation During COVID-19:**
  - Transitioned to online and hybrid training modes.
  - Focused on implementing a competency-based curriculum.
4. **National Conference for Allied Healthcare Professionals (2022):**
  - Hosted Uttarakhand's first hybrid conference in collaboration with FAIMER and international experts.
  - Featured 24 workshops, enhancing faculty knowledge and networking opportunities.
5. **Comprehensive Training Approach:**
  - Catered to undergraduates, postgraduates, and faculty, emphasizing both technical skills and ethical principles.

## Evidence of Practice

In five years, the Regional Centre has conducted **272 programs**, benefiting **28,779 participants**:

- **39 FDPs/Workshops:** Trained 997 faculty members.
  - **218 CME Sessions:** Reached 26,146 participants.
  - **Postgraduate Refresher Courses:** Benefited 443 students.
  - **Orientation Programs:** Supported 1,193 undergraduates and postgraduates.
-



## Outcomes

- **Improved Teaching Standards:** Faculty in 17 medical colleges use innovative methods, creating a dynamic learning environment for students.
- **Seamless Transition to Digital Learning:** Enabled hybrid teaching during the pandemic, supporting curriculum implementation.
- **Recognition and Networking:** National conferences foster collaboration with global experts, reinforcing SRHU's leadership.
- **Scalable Model:** Success inspires expansion into allied health sciences, engineering, and management disciplines.

## Challenges & Resources

- **Resource Person Shortage:** Addressed through internal faculty training and advanced fellowships.
- **COVID-19 Adaptation:** Overcame technological limitations to develop online teaching capabilities.

## Future Aspirations

- Extend the Regional Centre's model to other disciplines.
- Attain **Nodal Center status** to further impact medical education nationwide.

## Key Learnings

SRHU's journey highlights the transformative impact of a focused vision and strategic efforts. From addressing recruitment challenges to gaining national recognition, SRHU demonstrates how investment in faculty development and innovation can elevate medical education standards. By sharing its practices, SRHU inspires institutions across the country to replicate its model and drive widespread improvement.

---

## Financial and Technical Support for Development

---

- **Resource Mobilization:** SRHU actively secures funding for its sustainable development initiatives through:
  - Collaborations with government bodies and NGOs.
  - List of government bodies: [Link](#)
  - List of non -governmental bodies: [Link](#)
  - Partnerships with industries to sponsor research and development.
- **Technical Expertise Sharing:** The University provides its technical expertise to partner institutions and communities in areas such as:
  - Healthcare system development.
  - Sustainable infrastructure planning.
  - Data-driven decision-making processes.





---

## Promotion of Policy Coherence

---

Swami Rama Himalayan University (SRHU) actively aligns its internal policies and strategies with the global objectives of Sustainable Development Goal 17 (SDG 17): **Partnerships for the Goals**. This alignment ensures that the university integrates sustainable development into both academic and operational frameworks, fostering meaningful contributions toward global progress.

Key initiatives include:

- **Integrating Development Goals into Academic Frameworks:**  
SRHU incorporates SDG principles into its curriculum, research, and community outreach programs. By embedding sustainability concepts across disciplines, the university prepares students and faculty to address pressing global challenges, such as health disparities, environmental conservation, and social equity.
- **Operational Strategies for Sustainable Development:**  
The university has adopted policies that prioritize collaboration, resource sharing, and innovation. Initiatives like joint academic programs, industry partnerships, and global research projects reflect a commitment to fostering inclusive and equitable solutions that benefit local, regional, and global communities.
- **Capacity Building for Partnerships:**  
SRHU conducts training programs, workshops, and conferences to empower stakeholders with the knowledge and skills to collaborate effectively. These efforts promote multi-stakeholder engagement, bringing together academia, government, industries, and grassroots organizations to tackle complex issues.

By aligning its policies and strategies with SDG 17, SRHU strengthens its role as a catalyst for sustainable development, driving impactful partnerships and inspiring others to adopt similar approaches. This commitment not only enhances the university's contributions to global goals but also establishes it as a leader in fostering collaborative progress.

- [Link](#)