



GOAL 15

LIFE ON LAND

In alignment with the global commitment to achieving the United Nations Sustainable Development Goals (SDGs), Swami Rama Himalayan University (SRHU) reaffirms its dedication to preserving and protecting life on land. Recognizing the urgent need to safeguard biodiversity, restore degraded ecosystems, and promote sustainable land use, the University has implemented innovative and eco-friendly practices across its campus and beyond.

Guided by the principles of environmental stewardship, SRHU integrates sustainability into its operations, infrastructure, and education. Through initiatives such as tree plantation drives, rainwater harvesting, renewable energy adoption, and waste management, the University seeks to foster a harmonious relationship between humanity and nature.

"Together, we strive to conserve, restore, and sustainably use the land, ensuring a thriving ecosystem for all life forms."

Tree Plantation Drive

The Himalayan Institute of Medical Sciences (HIMS), SRHU, conducted a Plantation Drive as part of its 'Family Adoption Programme,' demonstrating a strong commitment to Sustainable Development Goal (SDG) 15: Life on Land. This initiative, aimed at promoting community engagement and environmental responsibility, encouraged students to adopt families in rural areas to provide healthcare support and foster environmental awareness. In collaboration with Gram Pradhan Rohit Nautiyal and the School Principal of Primary School Gauhri Mafi, over 150 students and community members gathered for the plantation drive in Gauhri Mafi village, Doiwala. Equipped with saplings and gardening tools, students planted 434 tree saplings, including native species such as Guava, Jamun, Litchi, Mango, Tulsi, Majestic Palms, and Marigold, around key community locations such as the Anganwadi centre and the primary school. These species were thoughtfully selected for their adaptability to the local climate and ecological benefits, such as air purification, carbon sequestration, and the creation of wildlife habitats, which align with SDG 15 objectives of conserving and restoring terrestrial ecosystems.



Enhancing Environmental Awareness and Education

As part of its continued dedication to environmental sustainability, Swami Rama Himalayan University (SRHU) reinforced its "Go Green Campus" campaign on the auspicious occasion of the Harela festival—a traditional celebration symbolizing nature worship and environmental conservation in Uttarakhand. This initiative aligns with Sustainable Development Goal (SDG) 15: Life on Land, reflecting SRHU's commitment to fostering a harmonious relationship between humanity and the environment.



Key Highlights:

- Around 100 saplings of native species including Jamun, Litchi, Amla, Pipal, Haldi, Amaltas, Lagerstroemia, and Gulmohar were thoughtfully planted across the already verdant SRHU campus.
- These indigenous species are well-suited to the local climate and contribute to ecological balance, enhancing biodiversity while requiring minimal external inputs.

Environmental Benefits:

- The plantation initiative contributes to carbon sequestration, air purification, and soil conservation within the campus.
- The addition of diverse plant species helps maintain ecological stability, reduce soil erosion, and foster a sustainable microclimate.

Creation of Microhabitats:

- The saplings will grow to create habitats for a variety of fauna, including birds, pollinators, and other wildlife, supporting essential ecological processes.

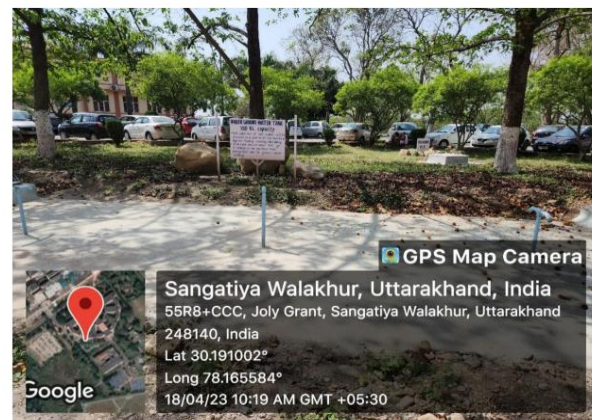
This initiative exemplifies SRHU's proactive approach to integrating cultural heritage with ecological conservation, fostering a green and sustainable environment for future generations.

Combatting Land Degradation and Desertification

Rainwater Harvesting

In alignment with Sustainable Development Goal (SDG) 15: Life on Land, SRHU has integrated eco-friendly water conservation strategies by setting up 12 rainwater harvesting pits across its 200-acre campus. These harvesting systems not only support the recharge of groundwater reserves but also play a critical role in combating land degradation caused by excessive groundwater extraction. By capturing over 40 crore liters of rainwater annually, the initiative helps maintain soil integrity, reduce erosion, and promote sustainable land management practices, contributing to a healthier and more resilient ecosystem.

[For more information](#)



Reduction of Pollution and Degradation

Soil Conservation Through Effluent Treatment

SRHU's commitment to environmental sustainability is demonstrated through its **90 KLD capacity Effluent Treatment Plant (ETP)**, and **600 KLD Sewage Treatment Plant (STP)** which ensures efficient wastewater management. The treated water is recycled for campus irrigation, significantly decreasing the reliance on freshwater resources. This approach not only conserves vital water supplies but also helps maintain soil quality by preventing untreated waste discharge into natural ecosystems and supporting sustainable land use



Plastic-Free Campus

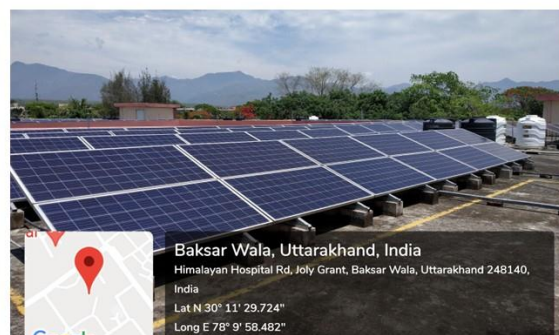
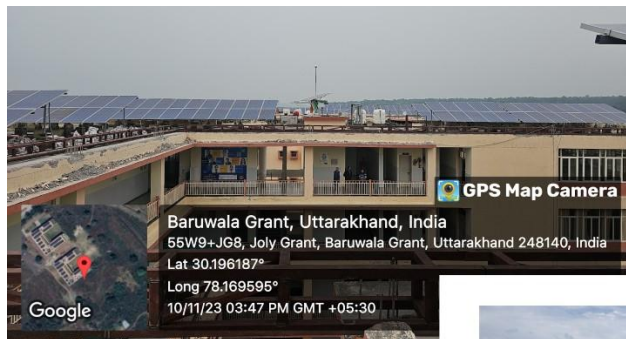
Swami Rama Himalayan University and Swami Rama Hospital are gearing up to become zero plastic waste campuses with support from SDC Foundation. Over the past 18 months, a plastic waste management program has led to the segregation and recycling of more than 3000 kg of plastic at CSIR-IIP. A 'Plastic Bank' on campus and the recent provision of 12 jumbo bins have strengthened these efforts. Chancellor Vijay Dhasmana and Vice Chancellor Dr. Rajendra Dobhal emphasized the institution's commitment to achieving this goal. SDC Founder Anoop Nautiyal pledged continued support, highlighting the collaborative effort to foster sustainability and reduce plastic pollution.



Integration of Renewable Energy and Sustainable Practices

Solar Power Initiatives

- The campus's 1500 KW rooftop solar power plant generates renewable energy, significantly reducing reliance on fossil fuels.
- Expansion plans for an additional 1000 KW aim to sustainably meet 40% of the university's electricity requirements.



Energy-Efficient Infrastructure

- SRHU uses **LED lights**, **BLDC fans**, and **BEE star-rated air conditioners** to minimize energy consumption, thereby reducing emissions and the environmental footprint of campus activities.



Green Campus and Garden

Swami Rama Himalayan University (SRHU) nurtures a green belt spanning approximately 1,60,800 sqm, featuring over 5,000 trees. A notable plantation drive in collaboration with the Uttarakhand State Forest Department in September 2022 added 3,300 saplings to this flourishing ecosystem. The campus maintains its green expanse through an in-house horticulture nursery managed by a dedicated team of 40 staff members. SRHU's vibrant biodiversity is home to 125 floral species and diverse fauna, including 15 bird species, 22 butterfly species, and representatives from reptile and amphibian categories. The sight of numerous bird nests across the campus underscores its role as a sanctuary for local wildlife.





Green Audit Certificate

Swami Rama Himalayan University (SRHU) has been recognized for its commitment to environmental sustainability by receiving the Green Audit Award. This prestigious award highlights the university's efforts in promoting eco-friendly practices across its campus, including effective waste management, energy conservation, water usage efficiency, and the promotion of green spaces. SRHU's dedication to sustainable development, reducing its carbon footprint, and implementing eco-friendly technologies has contributed to this recognition, underscoring its role in fostering environmental awareness and responsibility within the academic community.



CII-Gold Award 2023

The University is also honored with the prestigious CII-Gold Award 2023 in the "Green Practices Award" service category by the Confederation of Indian Industry (CII). SRHU became the first and only institution in North India to receive this recognition in this category. SRHU has become a model institution in education, health, and social development, with a strong focus on eco-friendly initiatives, energy conservation, water preservation, and environmental protection. The university's 200-acre campus houses various sustainability programs, such as effective waste management systems and large-scale tree plantation drives.



Key highlights:

- **Plastic Bank:** A dedicated initiative to promote the recycling of single-use plastics, significantly reducing plastic waste.
- **Electric Vehicles:** The adoption of electric vehicles for official purposes within the campus, promoting eco-friendly transportation and reducing fuel consumption.
- **Paper Recycling:** Establishment of a paper recycling unit to repurpose used paper for envelopes, cards, and file covers.
- **E-Waste Facility:** A dedicated e-waste storage and recycling facility to manage the growing issue of electronic waste.
- **Solar Energy:** SRHU meets 16% of its electricity needs through solar energy, reducing carbon emissions by approximately 1455 tons.